

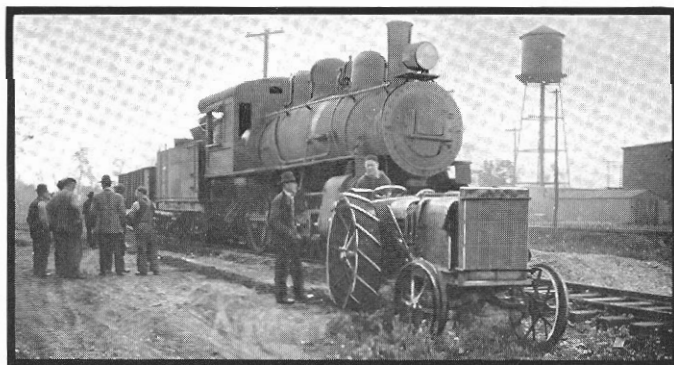
*Pulling Nine Passenger Coaches with a Bryan Light Steam Tractor at San Diego, Calif.*

## Pulling Nine Passenger Coaches

**H**UNDREDS OF TESTS have been made of the Bryan Light Steam Tractor in order to determine its power. Among the most interesting of these is the one as shown in the above picture. This was at San Diego, Calif., the morning of September 12th, when one of our tractors was hooked up to nine passenger coaches.

This load, estimated at about 260 tons, was pulled by our tractor, weighing around two and one-half tons, for a distance of about 100 feet to the astonishment of hundreds of people. In the pull, the tractor, which straddled one of the rails of the track, tore up a number of oak ties, thus demonstrating the wonderful power of the machine even under adverse conditions.

The picture at the bottom of this page shows another pulling stunt which took place near the factory at Peru on the morning of May 5th, when our tractor was hooked up to a large locomotive and a big steel coal car, the total weight of the two being about 120 tons. This load was pulled a considerable distance. At Needles, Calif., a Bryan tractor pulled ten railway cars, together with a steam shovel outfit, to the satisfaction of a large number of people.



*Pulling a Locomotive and One Car With a Bryan Light Steam Tractor at Peru, Indiana*