

Boiler Wizard™

Graphic Touch Screen



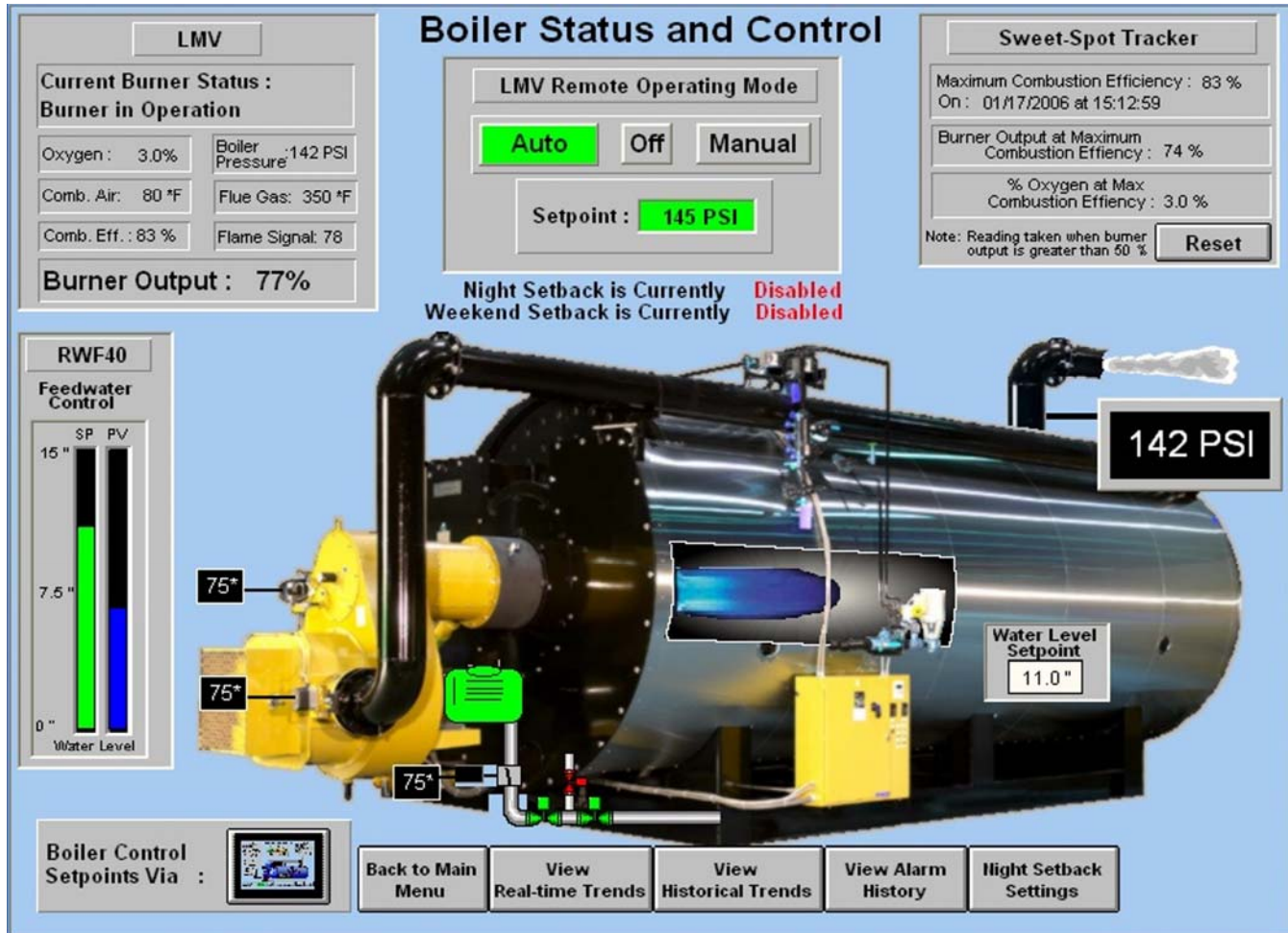
The *Intelligent* way to interface with the
SIEMENS LMV Linkageless Burner Management System

MECHTRONIC

R E S O U R C E S

Boiler Status & Control

The Boiler Wizard combined with the SIEMENS LMV Linkageless Burner Management System sets the standard in innovative technology to *control and monitor boiler operation*. One screen shows set-points and process data with graphical representation of valve and actuator positions with animation. Easy to use navigation buttons take you to Real-Time & Historical Trend screens, Alarm History, Night Setback Settings, Main Menu, Setup screens & optional Lead/Lag screens. The Sweet-Spot Tracker finds the boiler's peak efficiency point ⁽²⁾ and utilizes it to optimize Lead/Lag operation.

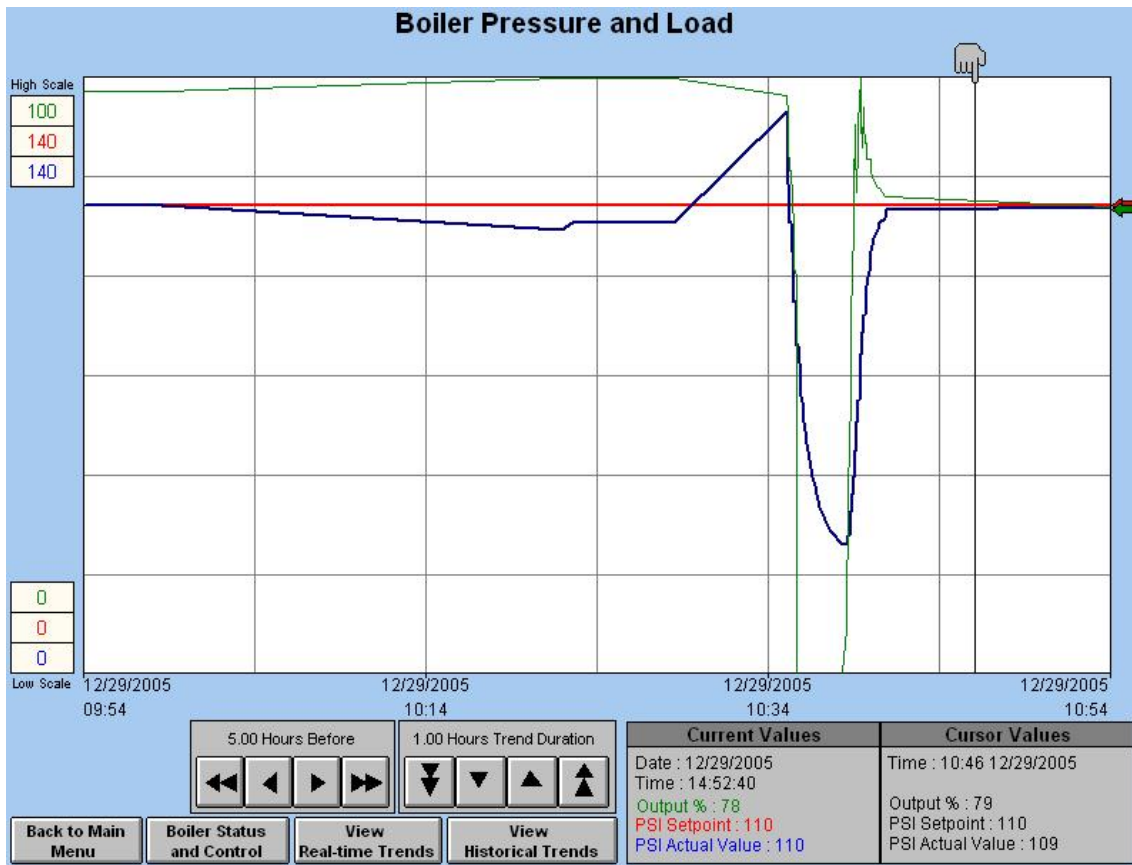


Dynamic Features of the Boiler Wizard

- Remotely accessible over a local intranet and/or
- Proactive alarms warn of impending problems before a shutdown occurs
- Standard OPC interface for Building Automation Systems
- Easy plug in and go installation
- 5.7", 12", or 15" screen sizes available
- Bump-less auto/manual transfer
- Optional Lead/Lag Control for Multiple Boiler Systems
- Night and Weekend setback
- Multiple Security Levels
- Prints trend screens and alarm logs
- Up to 16 analog signal inputs available for temperature, pressure, or flow measurement⁽¹⁾
- Optional interface with BACnet & LonWorks Building Automation Systems

Real-Time & Historical Trending

Quickly view real-time data up to 24 previous hours or browse through up to 30 days of archived historical data.



Trend Variables:

- Boiler SP, PV, and load
- Water level SP and PV
- Flue and supply air temperatures⁽²⁾
- Flue gas oxygen content⁽²⁾
- Combustion efficiency⁽²⁾
- Fuel flows⁽¹⁾
- Feed water flow⁽¹⁾
- Steam flow⁽¹⁾

Alarm Display and Logging

Alarms are stored in a log for up to 360 days. Description of fault, date and time of fault occurrence, acknowledgement and fault clearance are all logged. Alarms can be e-mailed to five recipients or paged with an optional phone modem.

| Fault | Time Active | Time Acknowledged | Time Cleared |
|---------------------------------------|---------------------|---------------------|---------------------|
| Communication Error | 11/16/2005 14:54:05 | | |
| PV Above Limit - User Specified Limit | 10/26/2005 18:24:28 | | 10/26/2005 18:24:33 |
| PV Above Limit - User Specified Limit | 10/26/2005 18:24:28 | | |
| PV Above Limit - User Specified Limit | 10/26/2005 15:20:11 | | 10/26/2005 15:21:44 |
| PV A | 10/26/2005 15:20:11 | | |
| PV B | 10/26/2005 15:18:35 | 10/26/2005 15:20:12 | 10/26/2005 15:19:36 |
| PV E | 10/26/2005 15:16:35 | | 10/26/2005 15:18:36 |

No LMV Alarms Active

Proactive Alarm:
Flame Signal Low

Siemens LMV Error Codes Alarm Acknowledge Close

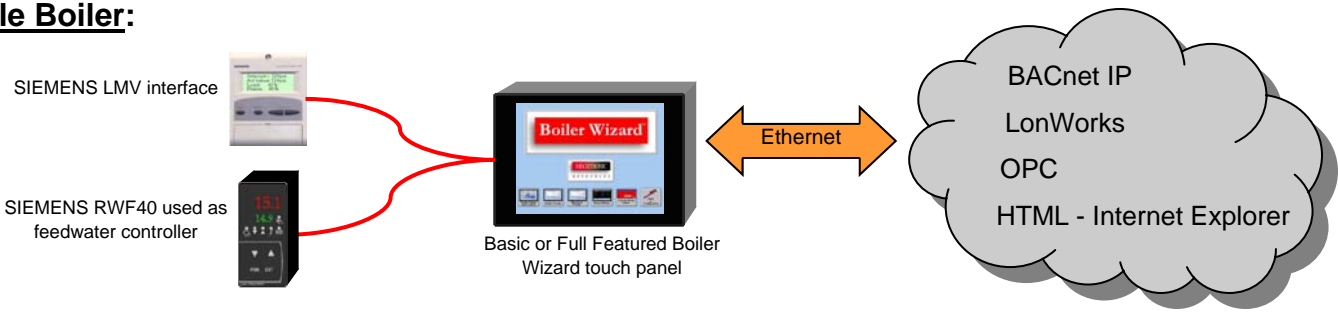
Popup window shows active alarm fault code and description, plus troubleshooting information

⁽¹⁾ Requires additional hardware

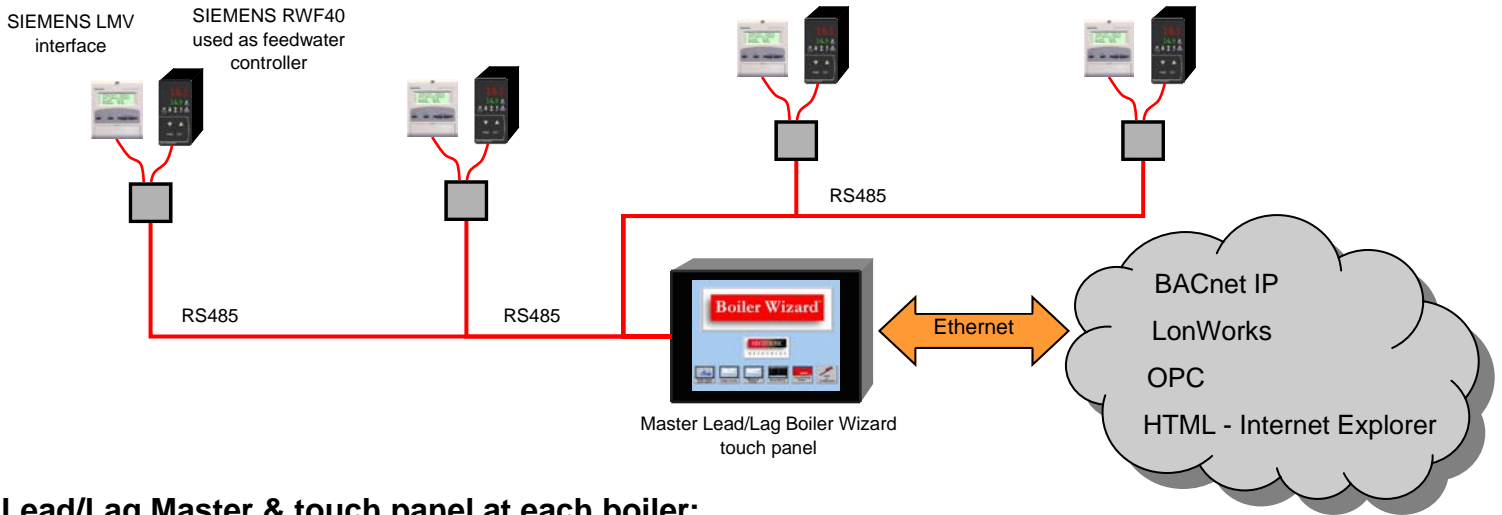
⁽²⁾ Depending on LMV model and options

Typical Configurations

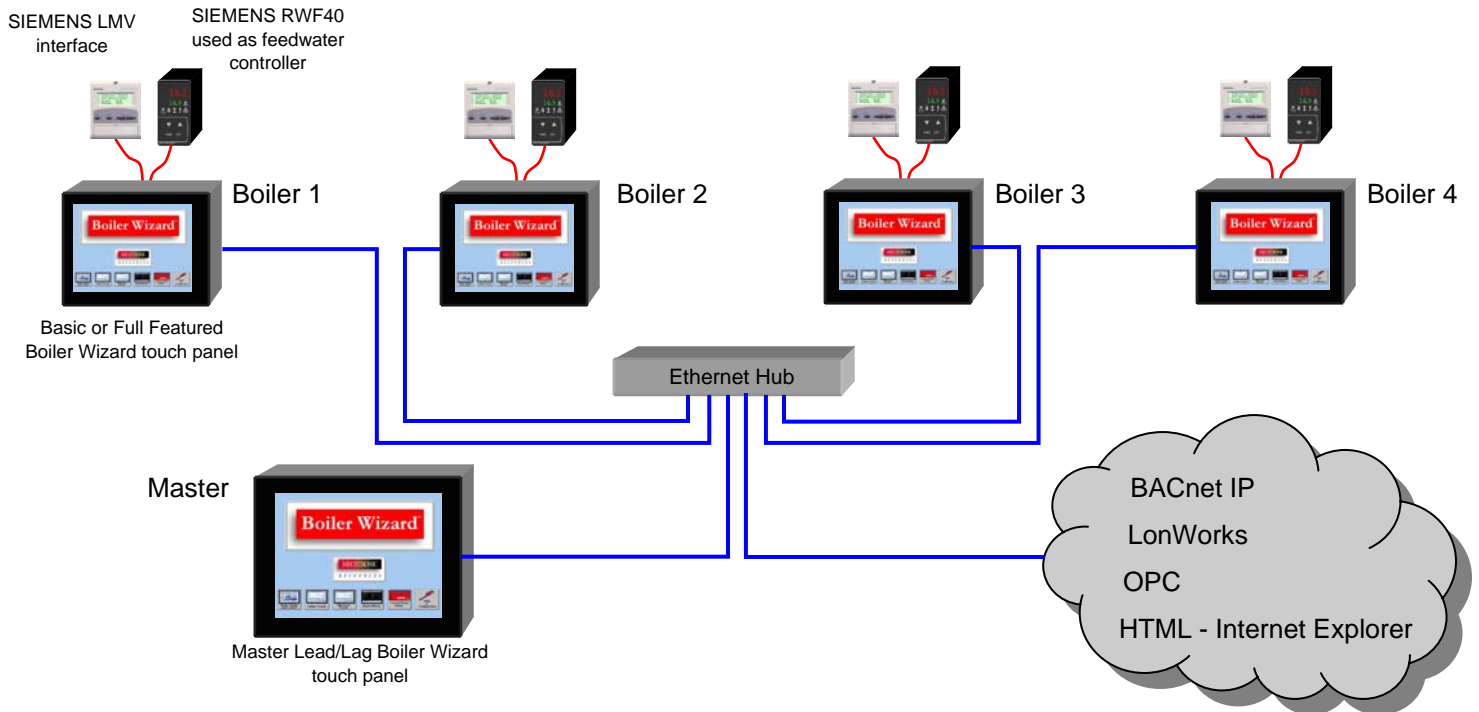
Single Boiler:



Lead Lag with Master only:



Lead/Lag Master & touch panel at each boiler:



MECHTRONIC
RESOURCES

37359 Blacow Road
Fremont, CA 94536

Phone 510-797-9787
Fax 510-797-9792
info@mechtronic.com